

MV Yarranabbe Drinks Packages



A WORKFORCE MARINE LEISURE GROUP COMPANY

1. Drinks Packages

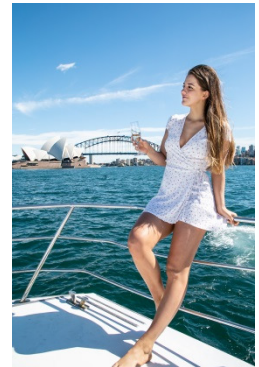
PACKAGE 1: \$15 per person per hour, min 3 hrs
Beer; Corona, Peroni.
White; Medhurst Chardonnay, Oyster Bay Sav Blanc
Red; Medhurst Shiraz
Sparkling; Seppelts Fluer De Lys Vintage Sparkling
Rose; Zilzie Selection 23 Rose
Water, Juice & Soft Drinks



PACKAGE 2: \$20 per person per hour, min 3 hrs
Beer; Corona, Peroni, Asahi, Napoleone Cider
White; Scarborough Chardonnay, Astrolab Sav Blanc, Corte Giara Pinot Grigio
Red; Medhurst Shiraz; Medhurst Pinot Noir
Sparkling; Croser Petaluma Sparkling
Rose; La Vieille Ferme Rose
Water, Juice & Soft Drinks



PACKAGE 3: \$28 per person per hour, min. 3 hours
Beer; Corona, Peroni, Asahi, James Squire 150 Lashes, Napoleone Cider
White; Cape Mentelle Chardonnay, Cloudy Bay Sav Blanc, The George Ellis Far Ago Pinot Gris, Hugel Gentil Riesling
Red; Penfolds 407 Shiraz, Faively Pinot Noir
Sparkling; Moet & Chandon Brut
Rose; Famille Perin Cotes du Rhone Rose
Spirits; Smirnoff Vodka, Gordons Gin, Jim Beam, Rum
Water, Juice & Soft Drinks



Booking # _____ **Expected number men / women** _____/_____

BYO Drinks

There is a BYO fee of \$250 for wine, beer, cider, soft drinks and pre-mixed drinks, based on 3-4 hour charter. If you would like to bring spirits please note all spirits must be handed to wait staff for serving. No passengers are permitted to serve themselves as Yarranabbe is a fully licensed establishment all passengers must obey the responsible service of alcohol laws. Please ensure you include soft drinks and water in your delivery.

Drinks need to be delivered to MV Yarranabbe in Rushcutters Bay 1-3 hours prior to departure. Unfortunately we do not have space to store drinks in advance of the charter. We reserve the right not to load all drinks in the case of an excessive delivery of drinks. Left over drinks will be boxed up for collection the next day. There is a storage fee of \$50 per day for drinks not collected the same day, or next day.

We supply: Glassware, tubs, ice, wait staff

Passenger Conduct

EastSail reserves the right to deny permission to board MV Yarranabbe if passengers arrive loud or intoxicated. Also during the charter, the skipper may decide to terminate the charter if passengers are aggressive to others, intoxicated or damaging property aboard. No refunds will be applicable if the charter is cut short.